

Dinosaur Electronics



We support stuff that would be extinct.

Dinosaur Electronics

Family owned business based in Oregon

Manufacture RV appliance boards for after market applications.

Our Products are made in the USA

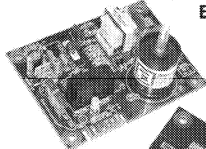
All replacement boards carry a 3 year warranty.

- 12VDC to 120VAC Converter
- 12VDC to 240VAC Converter
- 12VDC to 110VAC Converter
- 12VDC to 115VAC Converter

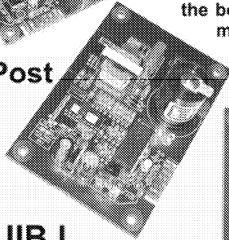
Universal and Fan Control Ignitor Boards

Universal Ignitor Boards

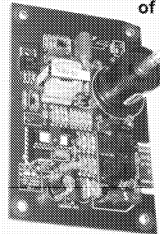
UIB S



UIB S Post



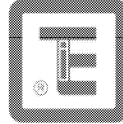
UIB L



UIB L Post

For 12 Volt Furnaces, Refrigerators and Water heaters

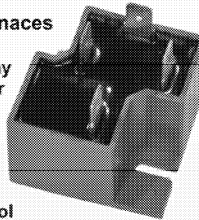
These universal 12VDC ignitor boards are certified by Testing Engineers International to meet UL 372 & UL 353 specifications for use in the RV industry. The UIB S, UIB S Post, UIB L and UIB L Post are all "electrically" identical but "mechanically" different for convenient installation. These rugged boards use double sided-plated thru hole technology for added reliability. They are fused to protect the board from short circuits in the NC and Valve circuitry. A two color LED monitors the NC and Valve terminals to let you know when there is power to the board - "GREEN" and when there is power for the Valve - "RED". These delayed 3-try ignitor boards with 20 second purge cycles and LOCAL flame sense also incorporate an option jumper. Removal of the jumper, for water heater and refrigerator use only, converts the board to INSTANT fire with a ONE minute purge cycle between the three ignition tries.



TDR

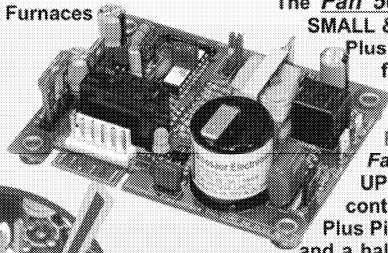
For 12 Volt DC Furnaces

Our replacement Time Delay Relay is for use in older furnaces that use a standard 12VDC ignitor board. The TDR has a 4 second delay before applying power to the fan motor, and a 2 minute cool down period at the end of the heat cycle before removing power from the fan motor.

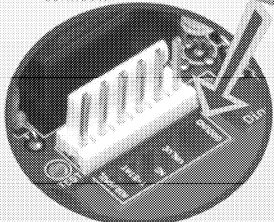


Fan 50 Plus Pins

For 12 Volt Furnaces



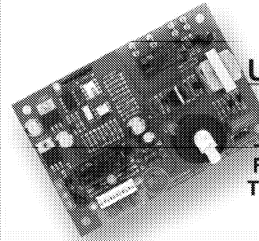
Use the new style 6 pin connector



Or use the old style Edge connector

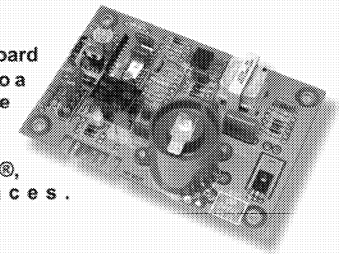
The *Fan 50 Plus Pins* replaces Dinosaur's earlier SMALL & LARGE fan boards as well as the Fan 50 Plus. It can also be used to replace the present fan control ignitor boards Being used by Suburban® and Atwood/Hydroflame®, but keep in mind that THE FAN CONTROL FEATURE MUST BE USED! In addition, the *Fan 50 Plus Pins* can also be used to UPGRADE an older furnace, giving it fan control features. The main features of the Fan 50 Plus Pins are (1) shut the fan motor OFF a minute and a half after the 3rd ignition try fails to sense a flame. And (2) wait one hour and try to cycle again before locking out and having to reset the thermostat. Besides being fused, a feature of all our ignitor boards is the GREEN/RED LED indicator
 - When GREEN - You have power to the board.
 - When RED - You have power to the Gas Valve.

Park Model Ignitor Board & Ignitor Board Accessories

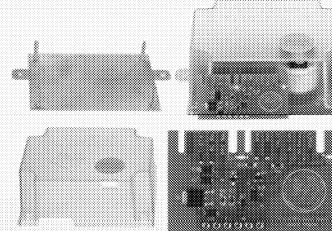


UIB 24VAC Fan Control This "Park model" board is a 3-try board using both remote and local flame sense. It is fuse protected and has a two color LED to let you know when there is power to the board - "GREEN" and when there is power for the valve - "RED". The UIB 24VAC Fan Control can be used in, Hydro-Flame® and Suburban® furnaces. This board is only to replace the 24V AC Park model Fan control boards.

UIB 24VAC This "Park model" board comes as a 3-try board using both remote and local flame sense. It can be converted to a single try by removal of a jumper on the board. It is fuse protected and has a two color LED to let you know when there is power to the board - "GREEN" and when there is power for the valve - "RED". The UIB 24VAC can be used in Duo-Therm®, Hydro-Flame® and Suburban® furnaces.



The kit shown assembled with a UIB S (sold separately)



AC/Gas Adapter Kit

If you want to use a UIB S to replace an Atwood®/Hydroflame® AC/GAS water heater board that has both a 4 pin and a 6 pin connector, use our UIB S along with this AC/Gas Adapter Kit. It consists of a small 4 and 6 pin electronic "control" board, a mounting plate, a cover and the appropriate hardware! Note: The UIB S is not included in this kit.

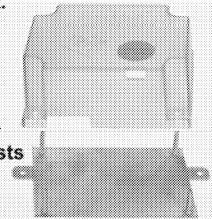
2-Tab Mounting Kit

If you want to use a UIB S to replace an Atwood®/Hydroflame® water heater board with the "2 TAB" mounting style, use our 2 Tab Mounting Kit that consists of a mounting plate, a board cover and the appropriate hardware!

Ignitor board covers

These translucent covers are made from fire retardant ABS and are for use in water heaters and refrigerators. In addition to providing some moisture protection from condensation and "hosing off" the coach, they also allow you to see the diagnostic LED without having to remove the cover.

Not for use in furnaces!

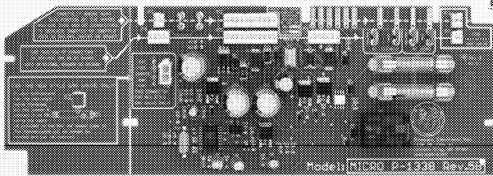


Replacement boards for Dometic® Refrigerators

MICRO P Series replacement circuit boards for Dometic® refrigerators have built in Microcontrollers for highly reliable operation. A self-resetting circuit breaker on the 12 Volt circuit protects the board from short circuits and accidental reverse polarity and a red LED comes on when the circuit breaker is tripped. These boards are fused on both sides of the AC to protect the board from short circuit faults in the AC heater element and wires.

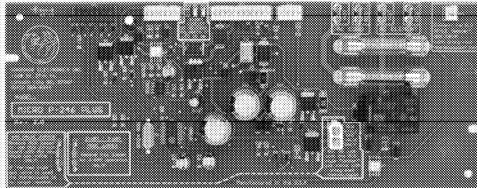
MICRO P-1338 Rev. 5 3-way (AC/DC/GAS) is fully compatible with both **OLD and NEW** gas valve systems used in Dometic® refrigerators. It replaces the earlier Micro P-13 and Micro P-1338.

Works in the following models:
RM 663, RM 763, RM 1303, RM 3500, RM 3600, RM 3800



MICRO P-246 Plus Comes as a 3-way (AC/DC/Gas). Remove an option jumper for 2-way operation. The New MICRO P-246 Plus is fully compatible with both the **OLD and NEW** gas valve systems used in Dometic® refrigerators. It replaces the earlier MICRO P-24 2-way, MICRO P-24 3-way and the MICRO P-26.

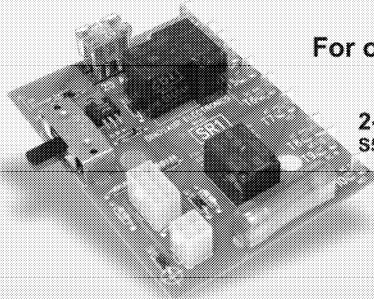
Works in the following models:
RM 2602, RM 2603, RM 2802, RM 2803,
RM 3501, RM 3601, RM 3604, RM 3801, RM 3804, RM 4801
RM 4804, RM 4804.002, RM 4804.004, RM 4804.005, RM 4804.006
and RM 7030 (prod #921890201 and 921890301)



For older Dometic®/Servel® refrigerators

SR1

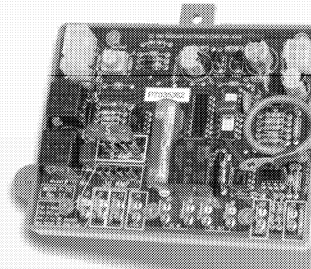
2-way or 3-way Works in the following models:
S520, S530, S619, S620, S630, S819, S820
and S830



“Black Box” Replacements have a variable Temperature adjustment for use with FIXED TEMP refrigerators. Fuse protected. Offer both 2-way and 3-way operation. The CHECK light comes on after each ignition try fails to sense a flame. In 3-way operation the DC element will drop out and the DC mode light will flash in 3-ways if the voltage levels fall to low for more than 10 seconds.

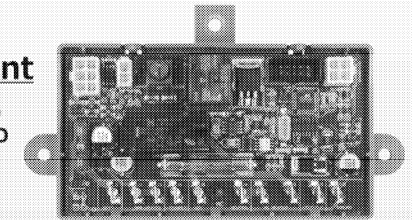
MICRO P-711

Original “Black box” replacement. Used to replace boards with part numbers beginning with 293. Our board has an improved thermocouple circuit to eliminate the “Recurring check light” problem. The Micro P-711 can be used as is to replace 2-way boards and can be used as a 3-way by adding the supplied fuse. All connections are clearly marked. This board works with or without the “Ground problem” wiring kit.



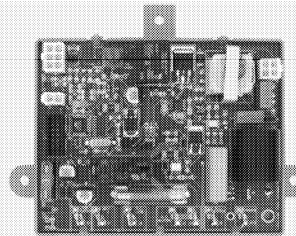
Dinosaur 3850415.01 Replacement

USE DINOSAURS 3850415.01 BOARD ONLY TO REPLACE PREVIOUSLY PROPERLY INSTALLED DOMETIC® 3850415-01 BOARDS.



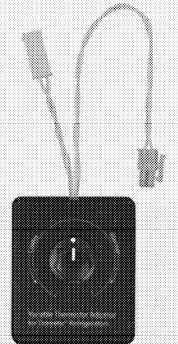
Dinosaur 3850712.01 Replacement

USED TO REPLACE DOMETIC® 3850712-01 BOARD WITH BUILT IN RE-IGNITOR.

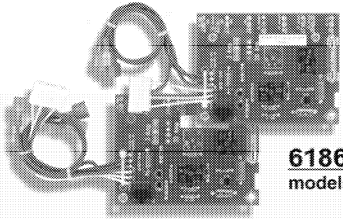


Dometic Variable Thermistor Adjuster

This Device is designed to be placed in series with the thermistor in the “fixed temperature” Dometic® Refrigerators. It then allows the owner to adjust the temperature. This product will only make a refrigerator run colder it will not allow you to adjust it to a warmer temperature.



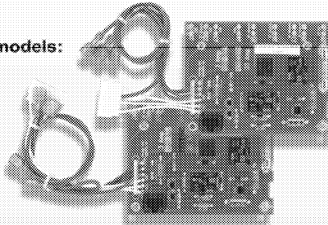
Replacement Boards for older Norcold® Refrigerators



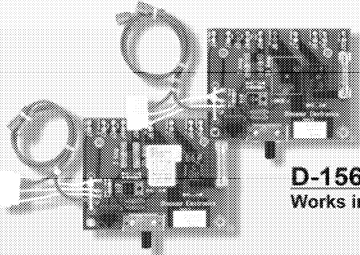
61647422 2-way Power supply board Works in the following models: 652, 662, 682, 6052, 6062, 6082, 6162, 6182, 6621M and 6821M

618661 2-way Power supply board. Works in the following models: 652, 662, 682, 6052, 6062, 6082, 6162, 6182, 6621M and 6821M

61647622 3-way Power supply board Works in the following models: 653, 663, 683, 6053, 6063, 6083, 6163, 6183, 6631M and 6831M

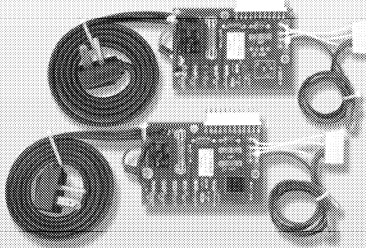


618666 3-way Power supply board works in the following models: 653, 663, 683, 6053, 6063, 6083, 6163, 6183, 6631M and 6831M



D-15711 2-way Power supply board (Norcold® catalog # 61571122) Works in the following models: 8662 and 8682

D-15650 3-way Power supply board (Norcold® catalog # 61565022) Works in the following models: 8663 and 8683

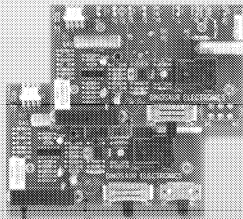


61716822 2-way Interface board works in the following models: *838 EG2 and *8310 EG2
*RECALL KIT MUST ALREADY BE INSTALLED

61716922 3-way Interface board works in the following models: *838 EG3 and *8310 EG3
*RECALL KIT MUST ALREADY BE INSTALLED

61602722 2-way Control board works in the following models: 876 EG2 and 878 EG2

61602822 3-way Control board works in the following models: 876 EG3 and 878 EG3



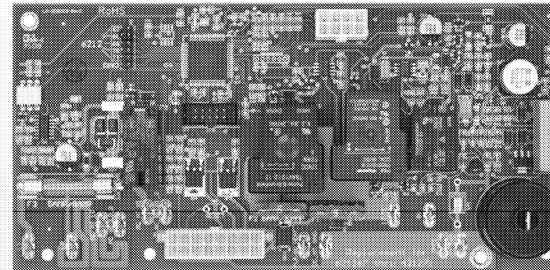
These board numbers are identical to the numbers on the boards they replace.
See our handy cross reference charts on page 14 of this catalog

For NORCOLD® Refrigerators

“ONE” Dinosaur Board # 6212XX will replace these TEN Norcold® Boards
Just put the selection jumper on the appropriate position

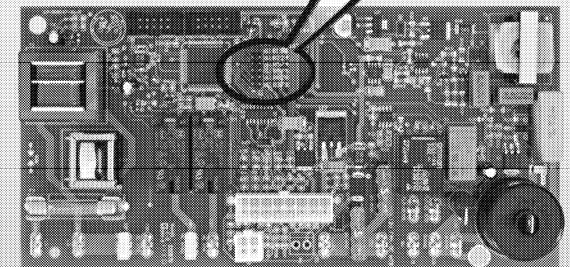
Replacing Norcold® part #	Jumper position
621267 & 621267.001	67
621268 & 621268.001	68
621269 & 621269.001	69
621270 & 621270.001	70
621271 & 621271.001	71
619353	67
619360	69
619361	70
628672	71
632168.001	67

For use with these part numbers only!
NO EXCEPTIONS!



N991 for older 900, 9100, and early 1200's.
This one board replaces SIX Norcold® boards,
just place the jumper in the corresponding position.

618198, 618224, 618574
618575, 618828, 619378

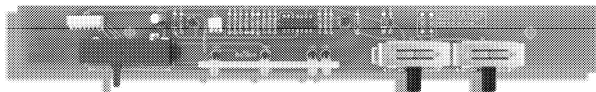


The 6212XX and the N991 work with the original optical control panels.

Eyebrow Replacements for Dometic®/Servel® refrigerators

These board numbers are identical to the numbers on the boards they replace.

Replacement Eyebrow for Servel® 3-way #2943244.000



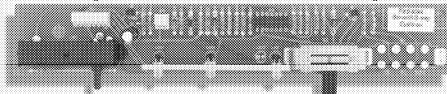
Replacement Eyebrow for Servel® 3-way #2944015.003



Replacement Eyebrow for Servel® 2-way #2943243.002



Replacement Eyebrow for Servel® 2-way #2944014.006



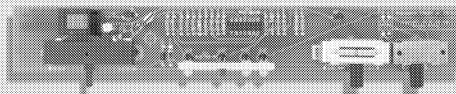
Replacement Eyebrow for
Dometic® Rm3500, Rm3600 & Rm3800



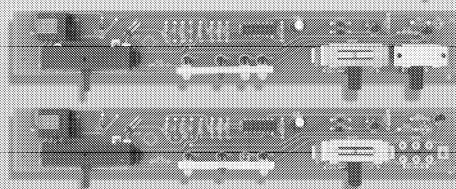
Eyebrow Replacements for older Norcold® Refrigerators

These board numbers are identical to the numbers on the boards they replace.

Replacement Eyebrow for
Norcold® 3-way #D-15639



Replacement Eyebrow for
Norcold® 2-way #D-15712



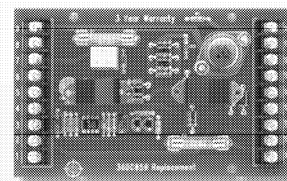
Replacement Eyebrow for
Norcold® 3-way #61647522

Replacement Eyebrow for
Norcold® 2-way #61647322

Page 16

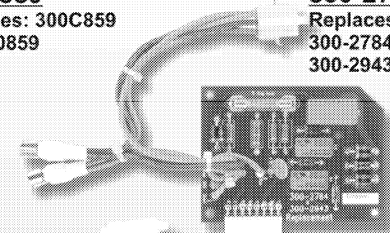
Replacement Boards for ONAN® Generators

Are made using double sided plated thru-hole technology to virtually eliminate intermittent connections. Simply match the Onan® board number with our board number for easy replacement.

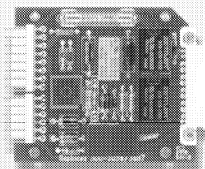


300C859
Replaces: 300C859
& 300-0859

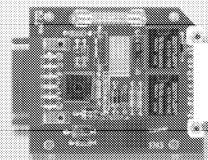
300-2784/2943
Replaces: 300-2784,
300-2784-01,
300-2943 & 300-2943-01



Includes a
new bridge
rectifier.



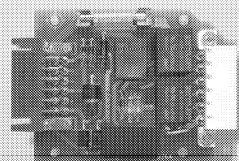
300-3056/3687
Replaces: 300-3056,
300-3687 & 300-3687-01



300-3763
Replaces: 300-3763,
300-3763-01,
300-3763-02 &
300-3763-03

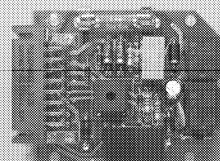
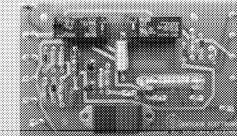


300-1073/4950 (With cable)
Replaces: 300-944, 300-0944,
300-1073 & 300-4950



300-3764
Replaces: 300-3764

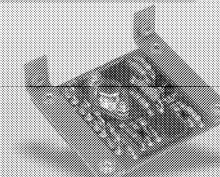
300-1073/4950 (With Spades)
Replaces: 300-944, 300-0944,
300-1073 & 300-4950



300-4901
Replaces: 300-4901



300-4902
Replaces: 300-4902



300-1227
Replaces: 300-1227

Page 17

Trouble shooting and support

We get 75 to 100 calls a day

MAINTENANCE

Regularly scheduled maintenance is the key to lower operating costs and longer service life for the unit. The following schedule can be used as a guide. However, actual operating conditions under which a unit is run should be the determining factor in establishing a maintenance schedule. When operating in very dusty or dirty conditions, some of the service periods may have to be reduced. Check the condition of the crankcase oil, the filters, etc. frequently until the proper service time periods can be established.

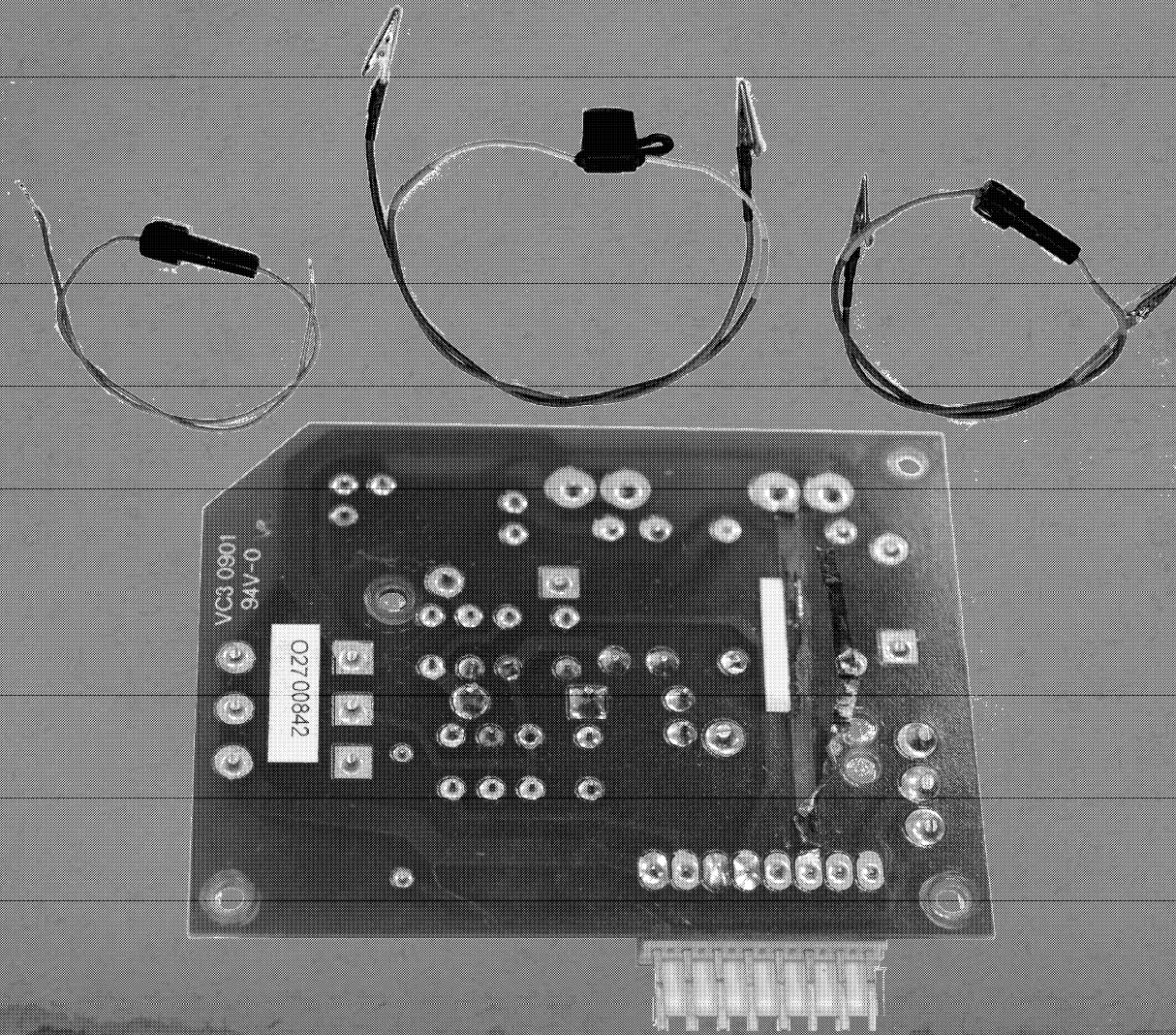
For any abnormalities in operation, unusual noises from engine or accessories, loss of power, overheating, etc., contact your nearest dealer.

PERIODIC MAINTENANCE SCHEDULE

SERVICE THESE ITEMS	AFTER EACH CYCLE OF INDICATED HOURS					
	8	50	100	200	400	1000
General Inspection	x					
Check Oil Level	x					
Check Battery		x				
Change Crankcase Oil			x1			
Check Air Cleaner			x1			
Check Breaker Points			x3			
Check Spark Plugs			x4			
Change Oil Filter				x1		
Clean Cooling Fins				x1		
Clean Crankcase Breather				x2		
Replace Breaker Points				x2		
Fuel Filter					x3	
Adjust Tappets					x2	
Replace Air Cleaner					x1	
Remove Carbon From Heads					x2	
Check Generator Brushes (For Sticking)		x5				
Complete Reconditioning (If Required)						x2
Check Generator Brushes (For Wear)						x2

- x1 - Perform more often in extremely dusty conditions.
- x2 - For detailed maintenance, contact your dealer.
- x3 - Replace if necessary.
- x4 - Replace at beginning of season.
- x5 - Check at this time (or sooner) if operating vehicle in extremely dusty conditions.

Before you jump any point on your board
make sure you are using the right tool!

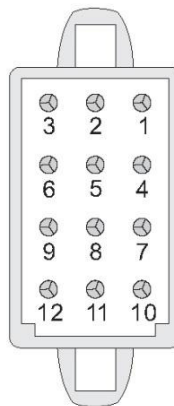


Pinouts for the 300-1073/4950 Board

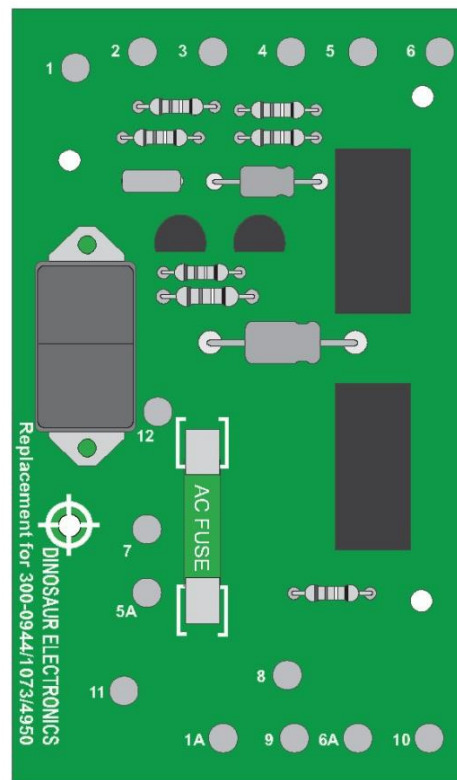
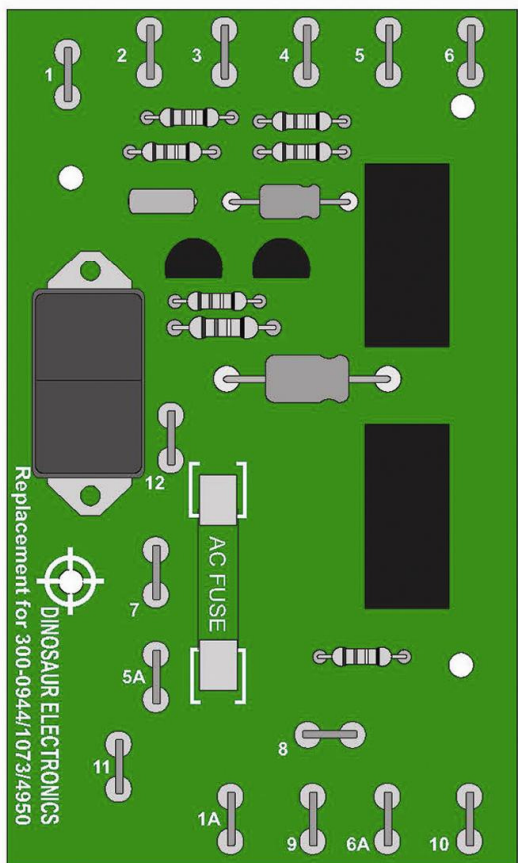
(without attached wire harness and connector)

- | | |
|----------------------------------|-------------------------------------|
| 1 ← GND | 6A → Run light / Hour meter |
| 1A → GND | 7 → Start solenoid |
| 2 ← Stop from remote switch | 8 ← Generator (24 VAC) |
| 3 ← Start from remote switch | 9 → Fuel pump solenoid and Ignition |
| 4 Not Used | 10 ← K1 contacts |
| 5 ← (+) From voltage regulator | 11 ← Battery (+) |
| 5A ← (+)V From voltage regulator | 12 ← Low oil pressure switch |
| 6 → Run light / Hour meter | |

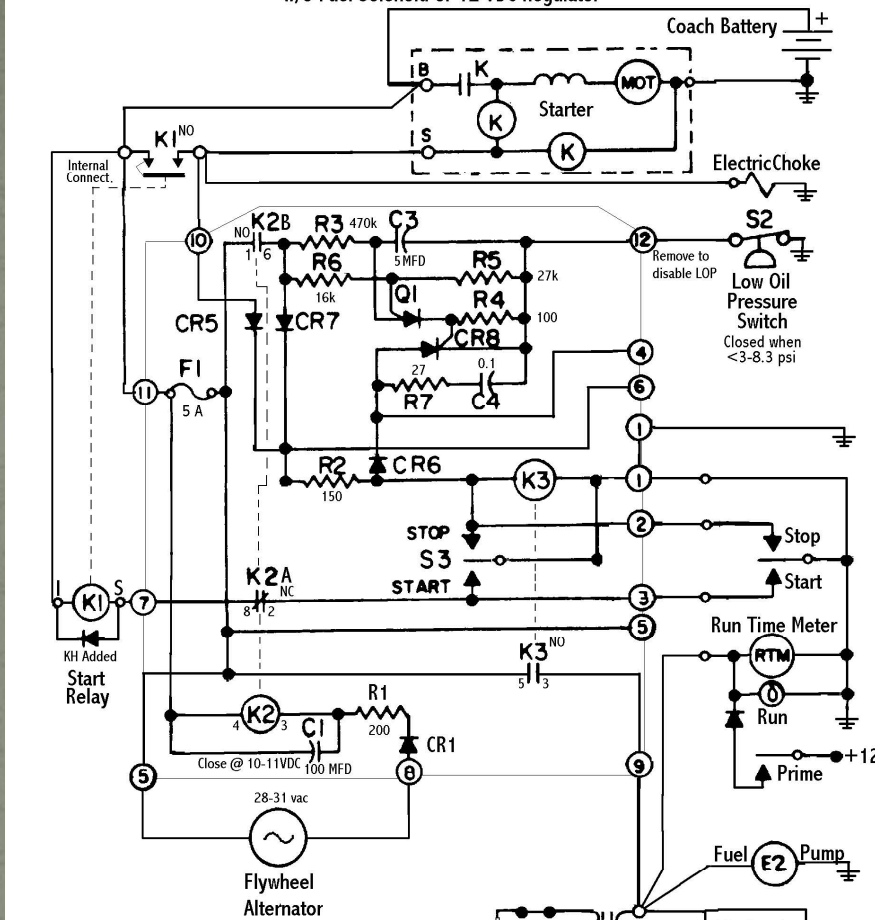
12 Pin connector



- | | |
|------|---------------------------------|
| 1 ← | GND |
| 2 → | Stop from remote switch |
| 3 ← | Start from remote switch |
| 4 ← | GND |
| 5 ← | (+) From voltage regulator |
| 6 → | (+)V from voltage regulator |
| 7 → | Start solenoid |
| 8 ← | Generator (24VAC) |
| 9 → | Fuel pump solenoid and Ignition |
| 10 ← | K1 contacts |
| 11 ← | Battery (+) |
| 12 ← | Low oil pressure switch |



Onan Generator Wiring w/Electronic Ignition w/o Fuel Solenoid or 12 VDC Regulator



(X) = Circuit Board Connector #

Troubleshooting Notes:

1. Jumper (5) to (9) to disable all protective functions.
2. Jump (7) or S (Start Relay left coil terminal) to ground to start by bypassing K2NC.
3. Jump (12) to Ground to test LOP stop within 3-4 sec.
4. Disconnect (12) to disable LOP
CAUTION - NO PROTECTION FROM OIL LOSS

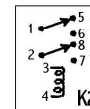
R1=200 Ohm
R2=150 Ohm
R3=470k Ohm
R4=100 Ohm
R5=27k Ohm
R6=16k Ohm
R7=27 Ohm

C1=100 MFD 25VDC
C3=5MFD 25VDC
C4=0.1MFD 100V
Q1=UJT (2N6027)
CR1-7=0.5A100V (1N4004)
CR8=GCR 0.8a30v (2N5064)

K2=ECG #RLY5142 400 ohm 2A DPDT
(Starter Disconnect / Hold Relay)

K3=ECG #RLY6522R 1400 ohm
(Run / Engine Stop Relay)

S2=NAPA OP6282 Close @ <3-8.3psi 1/8-27 NPT
(Engine Low Oil Pressure Switch)



Modified from the Onan Original
By Ken Henderson 7 Sep 2001